

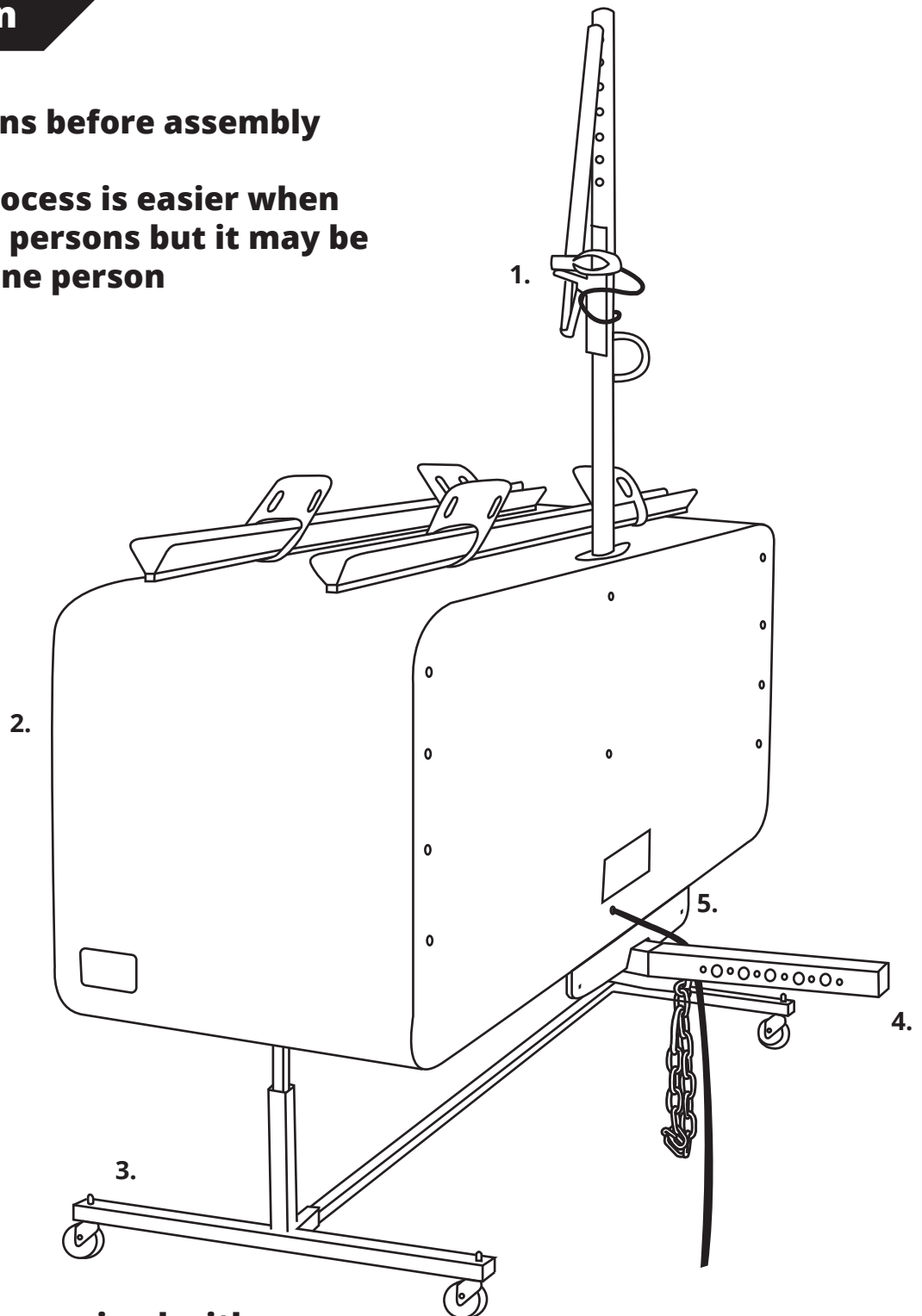
Cargo box / model 101 / fixed mount USER MANUAL

Product description

Read all instructions before assembly

The installation process is easier when carried out by two persons but it may be accomplished by one person

1. Bike rack pole
2. Cargo box
3. Trolley
4. Coupler
5. Fixed mount

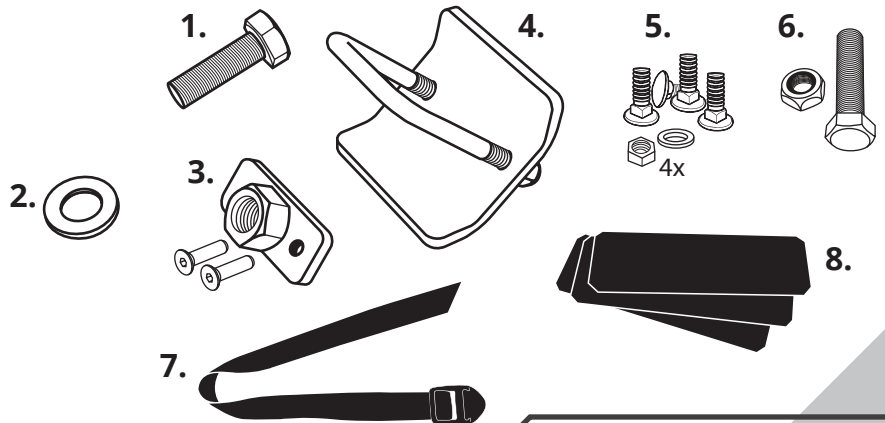


The vehicle must be equipped with a Class 3 hitch minimum, in good condition

Cargo box / model 101 / fixed mount

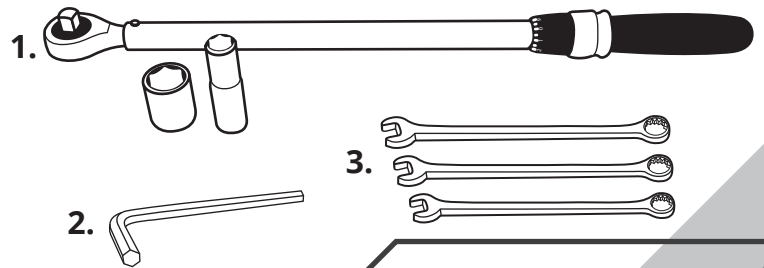
Parts included

1. 5/8 "-11 x 1 3/4" hexagonal bolt (grade 8)
2. 5/8 " heavy graded washer
3. Retaining plate and its two (2) screws
4. Anti-vibration plate
5. Carriage bolt (4) with washer and nut
6. Level adjustment screw (2)
7. Straps (8)
8. Protective rubbers



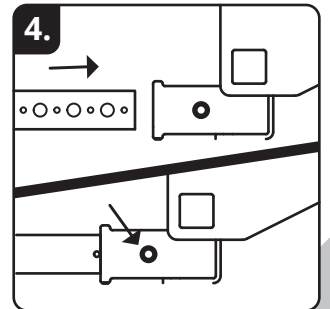
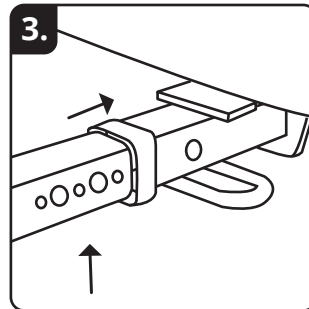
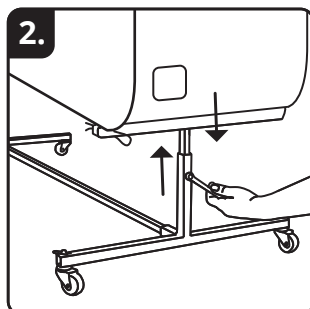
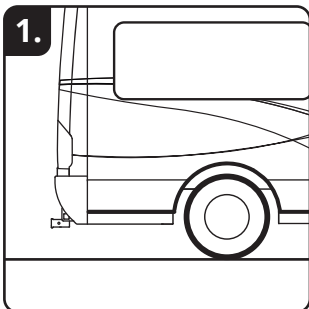
Required tools for assembly

1. Torque wrench with 15/16 "and 9/16" socket (long)
2. 3/16 " allen key.
3. 7/16 ", 1/2" and 9/16 " combination wrenches.



Installation of the Cargo box on the vehicle

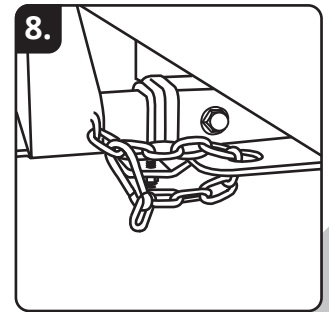
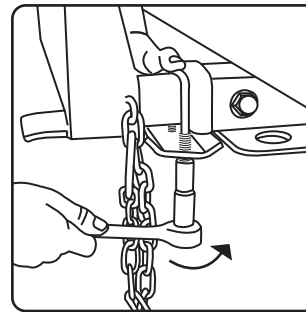
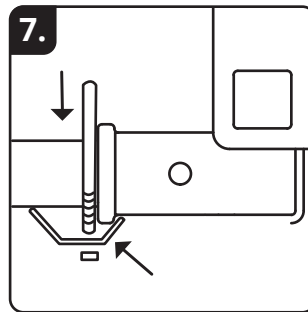
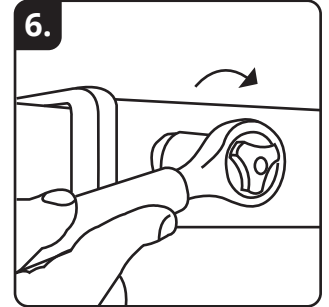
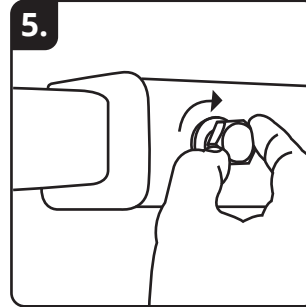
1. Make sure the vehicle is parked on a flat surface and verify that the hitch on the vehicle is clean and corrosion free.
2. Adjust the height of the trolley so that the coupler is at the same height or lower than the receiver of the hitch.
3. Move the cargo box on his trolley towards the hitch and insert the coupler in the receiver; lift slightly if necessary.
4. Push the cargo box using the bike mount to slide the coupler into the receiver. Slide it until the hole on the side of the receiver and the retaining plate hole (previously installed in the coupler) are aligned.



Cargo box / model 101 / fixed mount

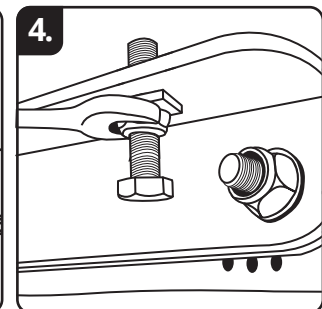
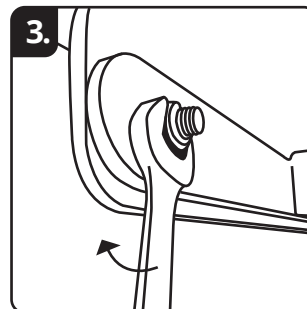
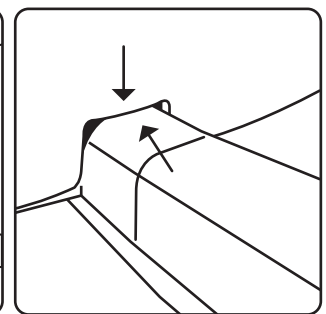
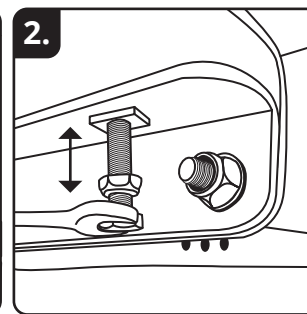
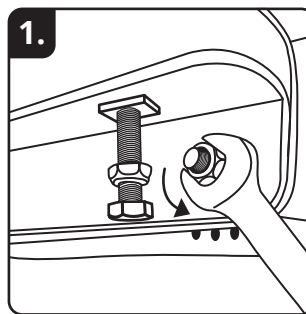
Make sure that the cargo box remains well balanced to be able to insert the bolt as shown in step 5.

5. Insert the bolt and screw the first threads by hand (the operation must be easy).
6. Finish tightening the bolt with the torque wrench. Follow the recommendations shown on the sticker placed on the back of the cargo box.
7. Install the anti-vibration plate. Pay attention to the proper positioning of the parts.
8. Tie the chain to the vehicle to make the installation safer. You may also add a lock if desired.
9. Plug in the electrical connections and make sure everything works properly.
10. Transfer the vehicle license plate to the cargo box.



Horizontal levelling process of the cargo box in relation with the vehicle, if necessary

1. Slightly unscrew the 4 nuts.
2. Use the two vertical adjustment screws (screw or unscrew) to visually level the cargo box in relation with the vehicle. Be careful not to over screw and lift the cargo box. The cargo box must remain leaned on the fixed mount.
3. When the level is reached, tightly screw the 4 nuts.
4. Secure the levelling process by screwing up the bolt until reaching the cargo box support base.

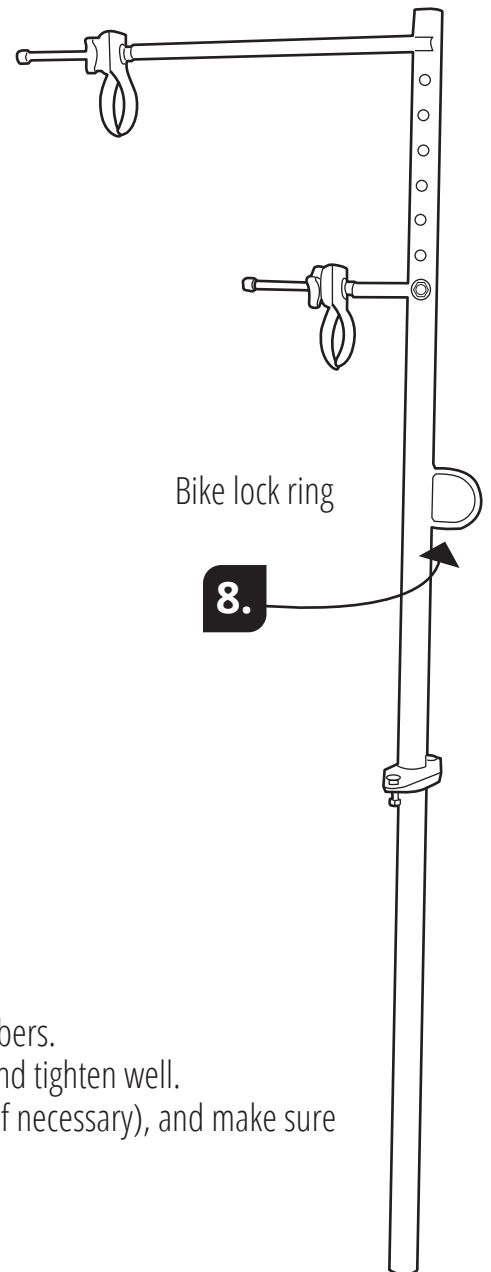
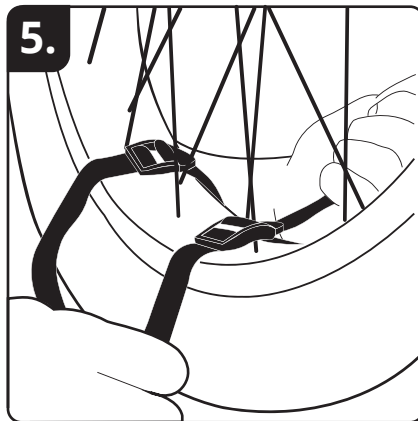
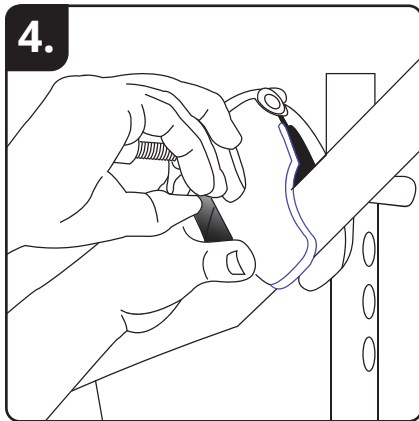
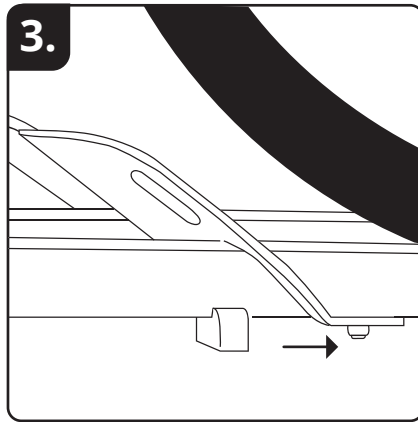
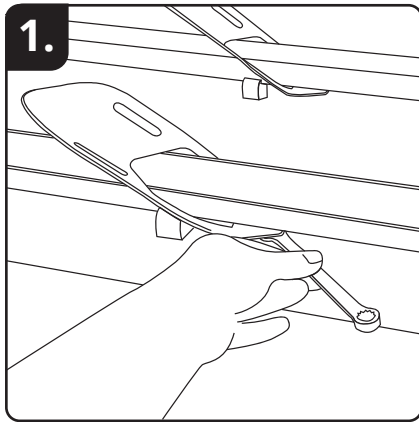


Cargo box / model 101 / fixed mount

Bikes installation on the cargo box

First, make sure that the total bike's weight does not exceed 60 lbs

1. Loosen the tire wedges with the $\frac{1}{2}$ combination wrench.
2. Place the first bike in the back rack.
3. Slide and adjust the tire wedges so that they lean well against the tires and tighten them in place.



4. Fit the short plier on the bike frame (adjust the height if needed).
It is recommended to protect the frame with the provided protective rubbers.
5. Install the security straps (two per tire) around both the tires and rack, and tighten well.
6. Repeat with the second bike in the front rack, using the long plier (adjust if necessary), and make sure the handlebars are oriented on the other side.
7. Install the straps.
8. Secure the two bikes with a cable lock, using the lock ring.
9. When travelling, verify once in a while that everything stays in place.